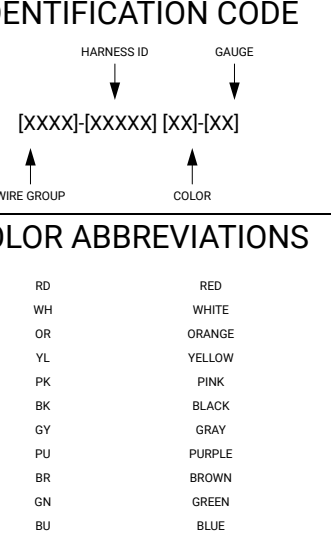


### HARNESS/WIRE IDENTIFICATION CODE



### COLOR ABBREVIATIONS

RD	RED
WH	WHITE
OR	ORANGE
YL	YELLOW
PK	PINK
BK	BLACK
GY	GRAY
PU	PURPLE
BR	BROWN
GN	BROWN
BU	BLUE

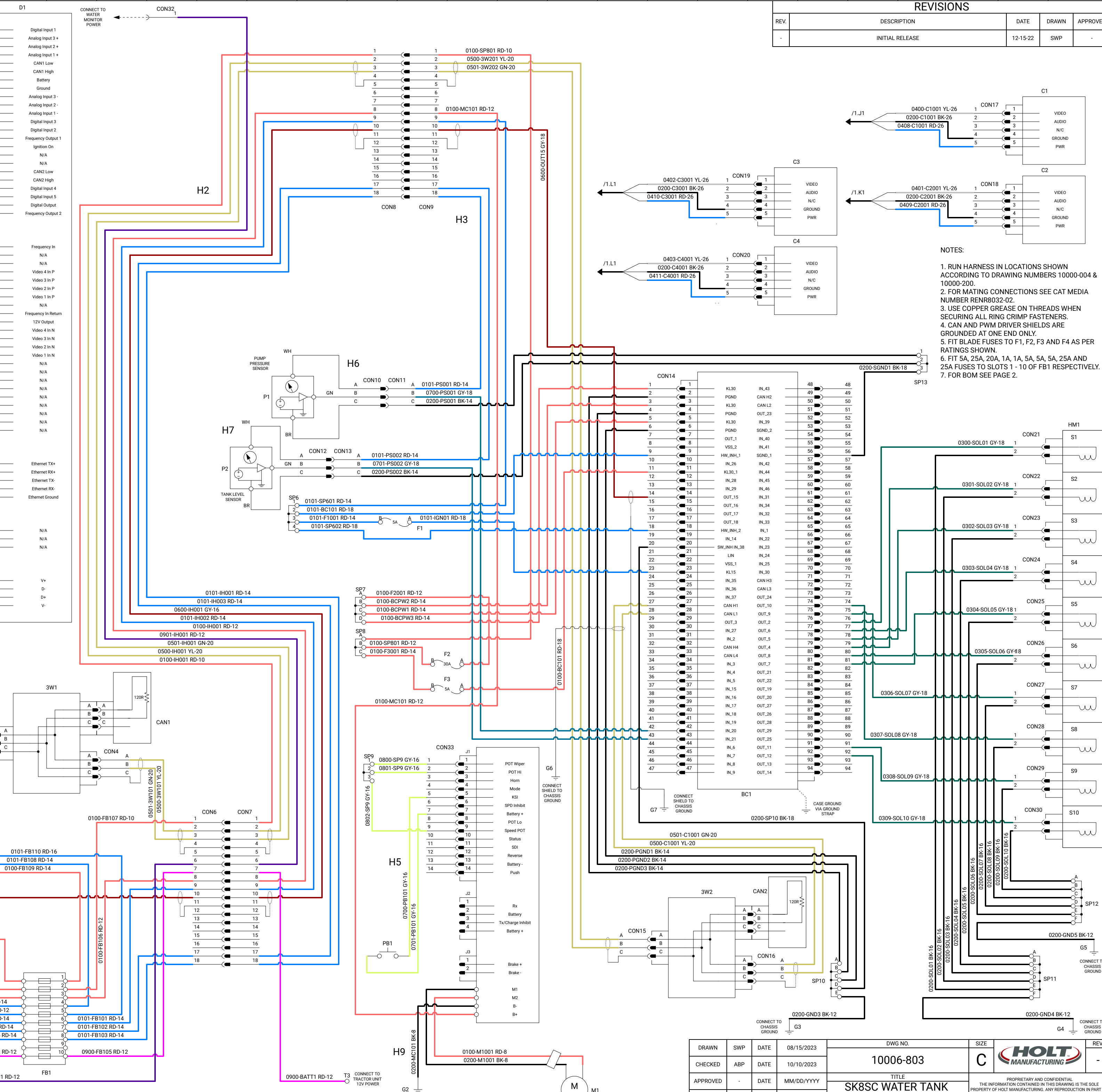
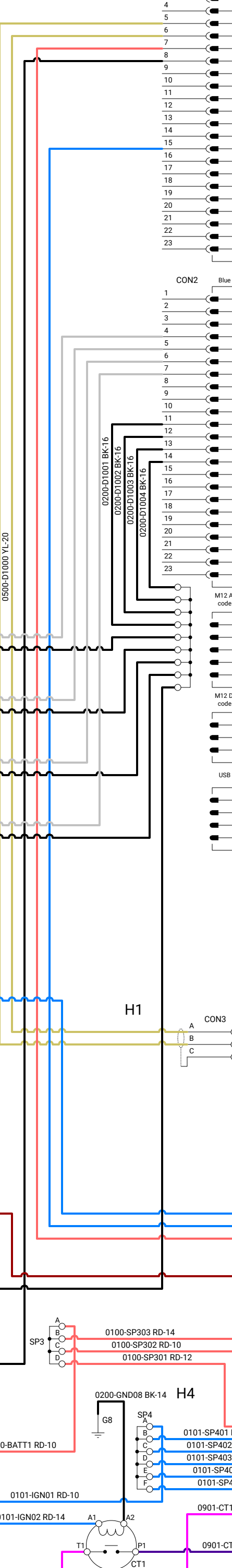
### LINE PATTERNS

---	WIRE
---	COMPONENT GROUP
---	SYMBOLS

### COLOR DESCRIPTIONS

---	24V POWER
---	SWITCHED 24V POWER
---	GROUND
---	JOYSTICK CIRCUIT
---	MONITOR CIRCUIT
---	REVERSE LIGHT AND BACKUP ALARM
---	TAIL LIGHT CIRCUIT
---	TURNOFF CIRCUIT
---	STOP CIRCUIT
---	PUMP PWM EMULATION
---	ROJ CIRCUIT
---	LEVEL/PRESSURE SENSOR CIRCUIT
---	WATER TRUCK CANBUS
---	SOLENOID DRIVER CHANNELS
---	VIDEO
---	BRAKE SYSTEM
---	12V POWER
---	SWITCHED 12V POWER
---	HOSE REEL CIRCUIT

### TANK SYSTEM SCHEMATIC



### REVISIONS


REV.	DESCRIPTION	DATE	DRAWN	APPROVED
-	INITIAL RELEASE	12-15-22	SWP	

- NOTES:  
1. RUN HARNESS IN LOCATIONS SHOWN ACCORDING TO DRAWING NUMBERS 10000-004 & 10000-200.  
2. FOR MATING CONNECTIONS SEE CAT MEDIA NUMBER RNR8032-02.  
3. USE COPPER GREASE ON THREADS WHEN SECURING ALL RING CRIMP FASTENERS.  
4. CAN AND PWM DRIVER SHIELDS ARE GROUND AT ONE END ONLY.  
5. FIT BLADE FUSES TO F1, F2, F3 AND F4 AS PER RATINGS SHOWN.  
6. FIT 5A, 25A, 20A, 1A, 1A, 5A, 5A, 25A AND 25A FUSES TO SLOTS 1 - 10 OF FB1 RESPECTIVELY.  
7. FOR BOM SEE PAGE 2.

DRAWN	SWP	DATE	08/15/2023	DWG NO.	10006-803	SIZE	C	REV.	
CHECKED	ABP	DATE	10/10/2023	TITLE	SK8SC WATER TANK ELECTRICAL SCHEMATIC	HOLT MANUFACTURING			
APPROVED		DATE	MM/DD/YYYY	THE INFORMATION CONTAINED IN THIS DRAWING IS THE SOLE PROPERTY OF HOLT MANUFACTURING. ANY REPRODUCTION IN PART OR AS A WHOLE WITHOUT THE WRITTEN PERMISSION OF HOLT MANUFACTURING IS PROHIBITED.					
PAGE	1 of 4	SCALE	NTS						

A  
B  
C  
D  
E  
F  
G  
H  
I  
J  
K  
L  
M  
N  
O  
P  
Q  
R  
S  
T

REFERENCE	DESCRIPTION	PART NUMBER	MANUFACTURER
SP2	SPLICE PACK	DT04-4P-P021	DEUTSCH
SP3	SPLICE PACK	38076	APTV/WAYTEK
SP4	SPLICE PACK	38076	APTV/WAYTEK
SP6	SPLICE PACK	DT04-4P-P021	DEUTSCH
SP7	SPLICE PACK	38076	APTV/WAYTEK
SP8	SPLICE PACK	38076	APTV/WAYTEK
SP9	SPLICE PACK	DT04-4P-P021	DEUTSCH
SP10	SPLICE PACK	38076	APTV/WAYTEK
SP11	SPLICE PACK	38076	APTV/WAYTEK
SP12	SPLICE PACK	38076	APTV/WAYTEK
SP13	SPLICE PACK	DT04-4P-P021	DEUTSCH
M1	HOSE REEL MOTOR	1185-1124-EF	COX REELS
CAN1	CAN RESISTOR	AT06-3S R120	AMPHENOL
CAN2	CAN RESISTOR	AT06-3S R120	AMPHENOL
D1	DISPLAY	PV700-T	ENNOVATION
BC1	BODAS CONTROLLER	RC10-10/31	BOSCH REXROTH
TS1	TRANSISTOR SWITCH ASSEMBLY	1-00513-01	HOLT MFG
F1	FUSE AND PLUG	12033769, 12033731	APTV/WAYTEK
F2	FUSE AND PLUG	12033769, 12033731	APTV/WAYTEK
F3	FUSE AND PLUG	12033769, 12033731	APTV/WAYTEK
3W1	3 WAY CONNECTOR	AT04-3P RV01	AMPHENOL
3W2	3 WAY CONNECTOR	AT04-3P RV01	AMPHENOL
P1	PUMP PRESSURE SENSOR	DMP331P-500-P150-3-3-TAO-Z0 0-1-1-1-000	SENSOR ONE
P2	TANK LEVEL SENSOR	DMP331P-500-P005-3-3-TAO-Z00 -1-1-1-000	SENSOR ONE
CON1	CONNECTOR	770680-1	AMP
CON2	CONNECTOR	770680-5	AMP
CON3	CONNECTOR	DT06-3S	DEUTSCH
CON4	CONNECTOR	DT06-3S	DEUTSCH
CON5	CONNECTOR	DT06-2S-EP11	DEUTSCH
CON6	CONNECTOR	AHDP04-24-18SN-SRA	AMPHENOL
CON7	CONNECTOR	AHDP06-24-18PN-SRA	AMPHENOL
CON8	CONNECTOR	AHDP06-24-18SN-SRA	AMPHENOL
CON9	CONNECTOR	AHDP04-24-18PR-SRA	AMPHENOL
CON10	CONNECTOR	DT04-3P-ED04	DEUTSCH
CON11	CONNECTOR	DT06-3S-ED04	DEUTSCH
CON12	CONNECTOR	DT04-3P-ED04	DEUTSCH
CON13	CONNECTOR	DT06-3S-ED04	DEUTSCH
CON14	CONNECTOR	R917010843	BOSCH REXROTH
CON15	CONNECTOR	DT06-3S-ED04	DEUTSCH
CON16	CONNECTOR	DT06-3S-ED04	DEUTSCH
CON17	CONNECTOR	RVS-10SN	RVS
CON18	CONNECTOR	RVS-10SN	RVS
CON19	CONNECTOR	RVS-10SN	RVS
CON20	CONNECTOR	RVS-10SN	RVS
CON21	CONNECTOR	DT06-2S-ED04	DEUTSCH
CON22	CONNECTOR	DT06-2S-ED04	DEUTSCH
CON23	CONNECTOR	DT06-2S-ED04	DEUTSCH
CON24	CONNECTOR	DT06-2S-ED04	DEUTSCH
CON25	CONNECTOR	DT06-2S-ED04	DEUTSCH
CON26	CONNECTOR	DT06-2S-ED04	DEUTSCH
CON27	CONNECTOR	DT06-2S-ED04	DEUTSCH
CON28	CONNECTOR	DT06-2S-ED04	DEUTSCH
CON29	CONNECTOR	DT06-2S-ED04	DEUTSCH
CON30	CONNECTOR	DT06-2S-ED04	DEUTSCH
CON32	CONNECTOR	DTH006-1-125	DEUTSCH
CON33	CONNECTOR	39-01-2140	MOLEX
C1	REARVIEW CAMERA	RVS-659	RVS
C2	DRIVER SIDE CAMERA	RVS-659	RVS
C3	MANHOLE CAMERA	RVS-770	RVS
C4	KERB SIDE CAMERA	RVS-659	RVS
H1	HARNESS	10031-811	HOLT MFG
H2	HARNESS	10032-811	HOLT MFG
H3	HARNESS	10033-811	HOLT MFG
H4	HARNESS	10034-811	HOLT MFG
H5	HARNESS	10035-811	HOLT MFG
H6	HARNESS	10036-811	HOLT MFG
H7	HARNESS	10037-811	HOLT MFG
H8	HARNESS	10038-811	HOLT MFG
H9	HARNESS	10039-811	HOLT MFG
HM1	HYDRAULIC MANIFOLD	2712513	WOMACK
FB1	FUSE BOX	PDM610012XM	LITTLEFUSE
PB1	PUSH BUTTON SWITCH	M-608-BX	LITTLEFUSE
MC1	MOTOR CONTROLLER	1212P	CURTIS
CT1	CONTACTOR	167-0138	CAT

DRAWN	SWP	DATE	08/15/2023	DWG NO.		SIZE	REV.
CHECKED	ABP	DATE	10/10/2023	10006-803		C	-
APPROVED	-	DATE	MM/DD/YYYY	TITLE			
PAGE	2 of 4	SCALE	NTS	SK8SC WATER TANK ELECTRICAL SCHEMATIC			
							PROPRIETARY AND CONFIDENTIAL THE INFORMATION CONTAINED IN THIS DRAWING IS THE SOLE PROPERTY OF HOLT MANUFACTURING. ANY REPRODUCTION IN PART OR AS A WHOLE WITHOUT THE WRITTEN PERMISSION OF HOLT MANUFACTURING IS PROHIBITED.

### HARNESS/WIRE IDENTIFICATION CODE

[xxxx]-[xxxxx] [xx]-[xx]

↑ WIRE GROUP      ↑ GAUGE  
↑ COLOR

---

### COLOR ABBREVIATIONS

RD	RED
WH	WHITE
OR	ORANGE
YL	YELLOW
PK	PINK
BK	BLACK
GY	GRAY
FU	PURPLE
BR	BROWN
GN	GREEN
BU	BLUE

---

### LINE PATTERNS

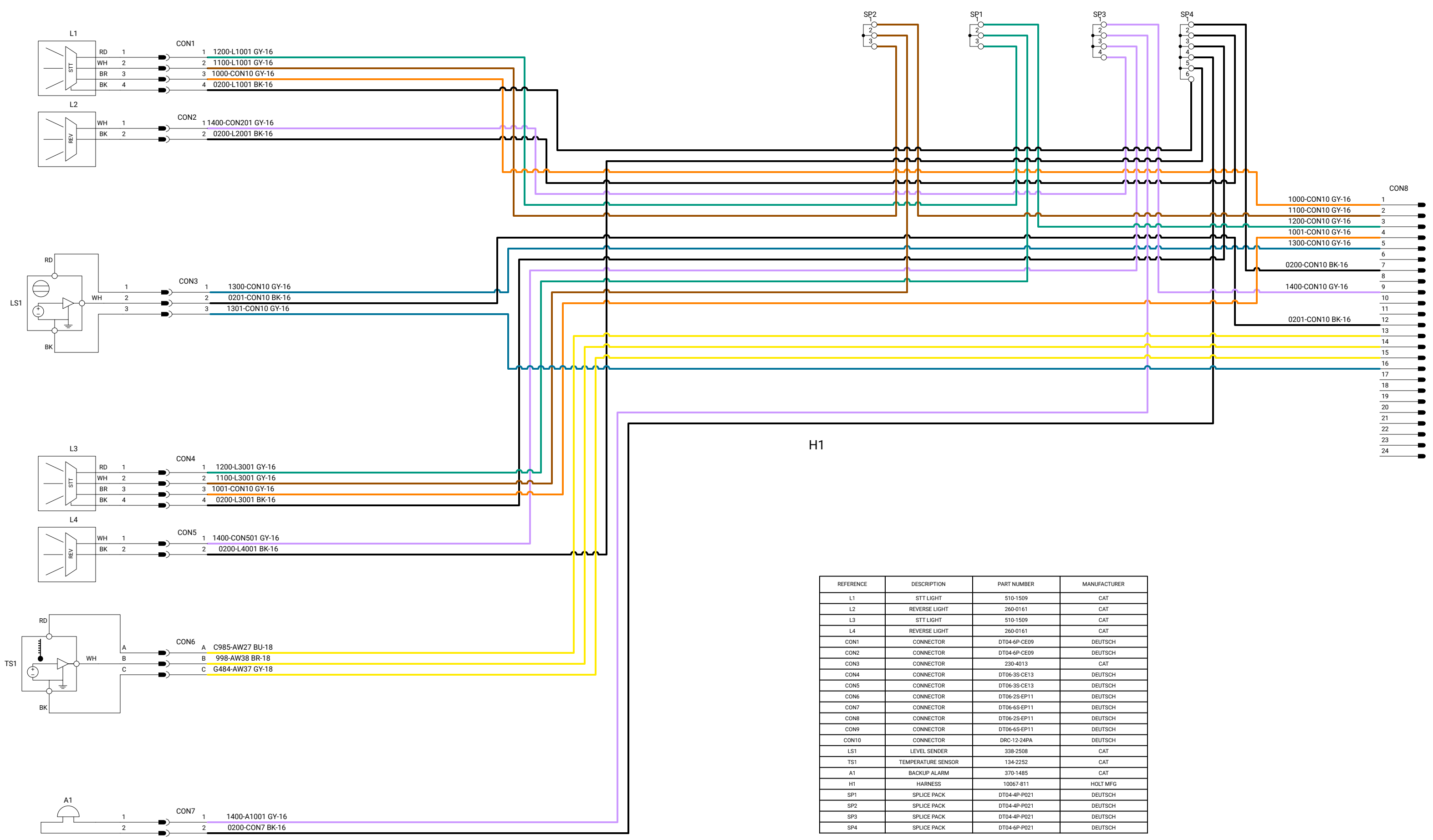
— WIRE  
- - - COMPONENT GROUP  
○ SYMBOLS

---

### COLOR DESCRIPTIONS

<span style="color:red">—</span>	24V POWER
<span style="color:blue">—</span>	SWITCHED 24V POWER
<span style="color:black">—</span>	GROUND
<span style="color:orange">—</span>	JOYSTICK CIRCUIT
<span style="color:green">—</span>	MONITOR CIRCUIT
<span style="color:purple">—</span>	REVERSE LIGHT AND BACKUP ALARM
<span style="color:yellow">—</span>	TAIL LIGHT CIRCUIT
<span style="color:lightblue">—</span>	TURN CIRCUIT
<span style="color:lightgreen">—</span>	STOP CIRCUIT
<span style="color:lightyellow">—</span>	PUMP PWM EMULATION
<span style="color:lightcyan">—</span>	ROJO CIRCUIT
<span style="color:lightmagenta">—</span>	LEVEL/PRESSURE SENSOR CIRCUIT
<span style="color:lightblue">—</span>	WATER TRUCK CANBUS
<span style="color:lightgreen">—</span>	SOLENOID DRIVER CHANNELS
<span style="color:lightyellow">—</span>	VIDEO
<span style="color:lightcyan">—</span>	BRAKE SYSTEM
<span style="color:lightmagenta">—</span>	12V POWER
<span style="color:lightblue">—</span>	SWITCHED 12V POWER
<span style="color:lightgreen">—</span>	HOSE REEL CIRCUIT

## TRACTOR UNIT SCHEMATIC



REFERENCE	DESCRIPTION	PART NUMBER	MANUFACTURER
L1	STT LIGHT	510-1509	CAT
L2	REVERSE LIGHT	260-0161	CAT
L3	STT LIGHT	510-1509	CAT
L4	REVERSE LIGHT	260-0161	CAT
CON1	CONNECTOR	DT04-6P-CE09	DEUTSCH
CON2	CONNECTOR	DT04-6P-CE09	DEUTSCH
CON3	CONNECTOR	230-4013	CAT
CON4	CONNECTOR	DT06-3S-CE13	DEUTSCH
CON5	CONNECTOR	DT06-3S-CE13	DEUTSCH
CON6	CONNECTOR	DT06-2S-EP11	DEUTSCH
CON7	CONNECTOR	DT06-6S-EP11	DEUTSCH
CON8	CONNECTOR	DT06-2S-EP11	DEUTSCH
CON9	CONNECTOR	DT06-6S-EP11	DEUTSCH
CON10	CONNECTOR	DRC-12-24PA	DEUTSCH
LS1	LEVEL SENDER	338-2508	CAT
TS1	TEMPERATURE SENSOR	134-2252	CAT
A1	BACKUP ALARM	370-1485	CAT
H1	HARNESS	10067-811	HOLT MFG
SP1	SPLICE PACK	DT04-4P-P021	DEUTSCH
SP2	SPLICE PACK	DT04-4P-P021	DEUTSCH
SP3	SPLICE PACK	DT04-4P-P021	DEUTSCH
SP4	SPLICE PACK	DT04-6P-P021	DEUTSCH

NOTES:  
1. RUN HARNESSES IN LOCATIONS SHOWN IN DRAWING NUMBERS 10000-004 & 10000-200.

DRAWN	SWP	DATE	08/15/2023	DWG NO.	10006-803	SIZE	C	REV.	-
CHECKED	ABP	DATE	10/10/2023	TITLE	SK8SC WATER TANK ELECTRICAL SCHEMATIC	PROPRIETARY AND CONFIDENTIAL THE INFORMATION CONTAINED IN THIS DRAWING IS THE SOLE PROPERTY OF HOLT MANUFACTURING. ANY REPRODUCTION IN PART OR AS A WHOLE WITHOUT THE WRITTEN PERMISSION OF HOLT MANUFACTURING IS PROHIBITED.			
APPROVED	-	DATE	MM/DD/YYYY	SCALE	NTS				
PAGE	3 of 4								

### HARNESS/WIRE IDENTIFICATION CODE

HARNESS ID GAUGE  
[xxxx]-[xxxxx] [xx]-[xx]

↑ WIRE GROUP ↑ COLOR

### COLOR ABBREVIATIONS

RD	RED
WH	WHITE
OR	ORANGE
YL	YELLOW
PK	PINK
BK	BLACK
GY	GRAY
PV	PURPLE
BR	BROWN
GN	GREEN
BU	BLUE

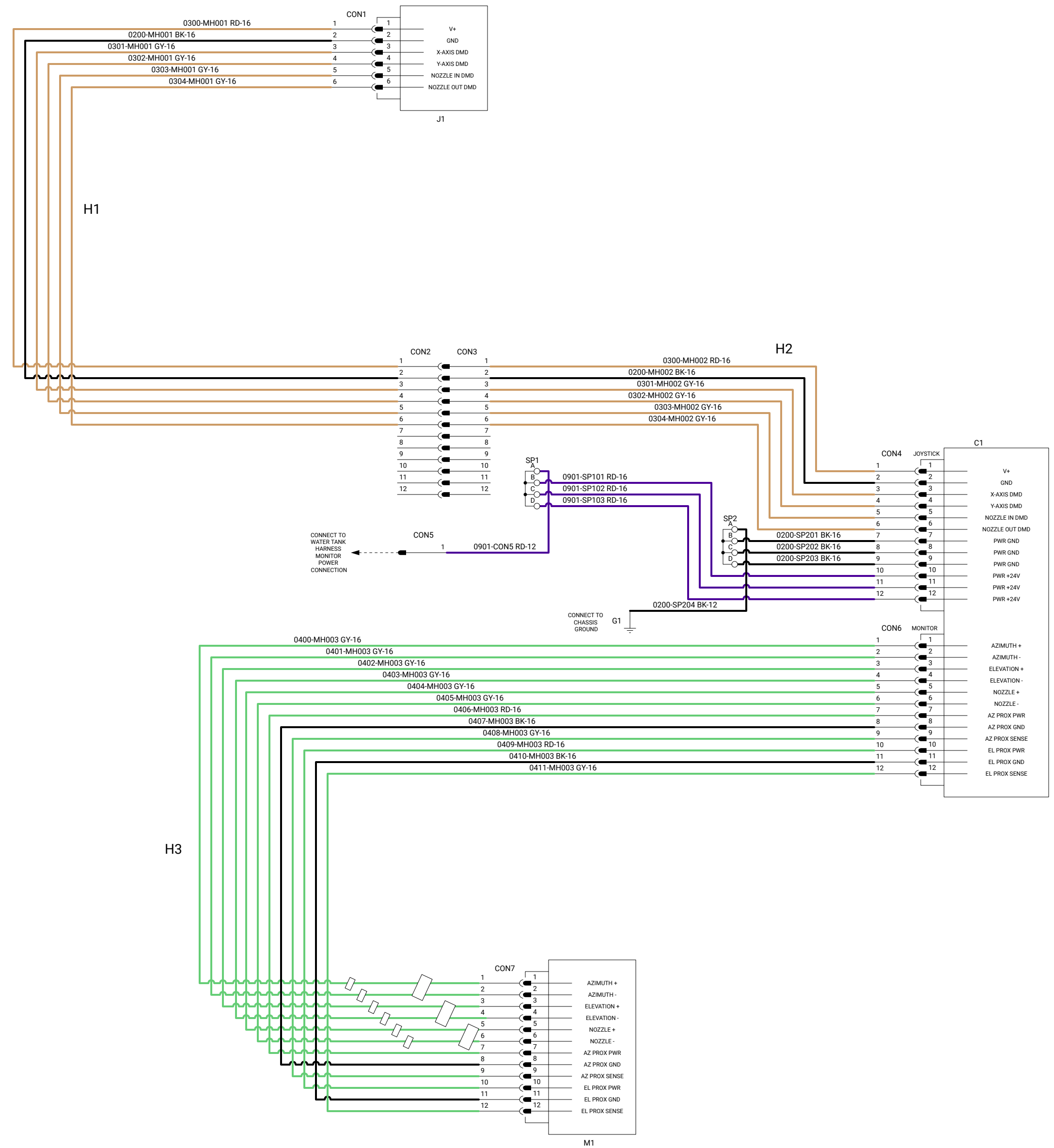
### LINE PATTERNS

— WIRE  
- - - COMPONENT GROUP  
○ SYMBOLS

### COLOR DESCRIPTIONS

Red	24V POWER
Blue	SWITCHED 24V POWER
Black	GROUND
Orange	JOYSTICK CIRCUIT
Green	MONITOR CIRCUIT
Purple	REVERSE LIGHT AND BACKUP ALARM
Yellow	TAIL LIGHT CIRCUIT
Light Blue	TURN CIRCUIT
Light Green	STOP CIRCUIT
Light Purple	PUMP PWM EMULATION
Light Orange	ROJO CIRCUIT
Light Yellow	LEVEL/PRESSURE SENSOR CIRCUIT
Light Green	WATER TRUCK CANBUS
Light Blue	SOLENOID DRIVER CHANNELS
White	VIDEO
Light Purple	BRAKE SYSTEM
Light Orange	12V POWER
Light Green	SWITCHED 12V POWER
Light Blue	HOSE REEL CIRCUIT

### WATER MONITOR SCHEMATIC



REFERENCE	DESCRIPTION	PART NUMBER	MANUFACTURER
C1	MONITOR CONTROLLER	81824001	ELKHART BRASS
J1	JOYSTICK	41067000	ELKHART BRASS
M1	WATER MONITOR	00008101_07000804	ELKHART BRASS
CON1	CONNECTOR	DTM06-6S	DEUTSCH
CON2	CONNECTOR	DTM04-12SA	DEUTSCH
CON3	CONNECTOR	DTM04-12PA-L012	DEUTSCH
CON4	CONNECTOR	DTM06-12SA	DEUTSCH
CON5	CONNECTOR	ATH004-112P-PM05	AMPHENOL
CON6	CONNECTOR	DTM06-12SB	DEUTSCH
CON7	CONNECTOR	DTM06-12SC	DEUTSCH
H1	HARNESS	10045-811	HOLT MFG
H2	HARNESS	10046-811	HOLT MFG
H3	HARNESS	10063-811	HOLT MFG
SP1	SPLICE PACK	38076	APTIV/WAYTEK
SP2	SPLICE PACK	38076	APTIV/WAYTEK

NOTES:  
 1. RUN HARNESS IN LOCATIONS SHOWN USING DRAWING NUMBERS 10000-004 & 10000-200.  
 2. USE COPPER GREASE ON THREADS WHEN SECURING ALL RING CRIMP TERMINALS.  
 3. CONNECT CON5 TO MATING POWER CONNECTOR.

DRAWN	SWP	DATE	08/15/2023	DWG NO.	10006-803	SIZE	C	REV.	-
CHECKED	ABP	DATE	10/10/2023	TITLE	SK8SC WATER TANK ELECTRICAL SCHEMATIC				
APPROVED	-	DATE	MM/DD/YYYY	PROPRIETARY AND CONFIDENTIAL. THE INFORMATION CONTAINED IN THIS DRAWING IS THE SOLE PROPERTY OF HOLT MANUFACTURING. ANY REPRODUCTION IN PART OR AS A WHOLE WITHOUT THE WRITTEN PERMISSION OF HOLT MANUFACTURING IS PROHIBITED.					
PAGE	4 of 4	SCALE	NTS						