

REVISIONS

REV.	DESCRIPTION	DATE	DRAWN	APPROVED
-	INITIAL RELEASE	10-03-23	SWP	-

**HARNESS/WIRE IDENTIFICATION CODE**

HARNESS ID GAUGE  
 [XXXX]-[XXXXX] [XX]-[XX]

WIRE GROUP COLOR

---

**COLOR ABBREVIATIONS**

RD	RED
WH	WHITE
OR	ORANGE
YL	YELLOW
PK	PINK
BK	BLACK
GY	GRAY
PU	PURPLE
BR	BROWN
GN	GREEN
BU	BLUE

---

**LINE PATTERNS**

WIRE  
 COMPONENT GROUP  
 SYMBOLS

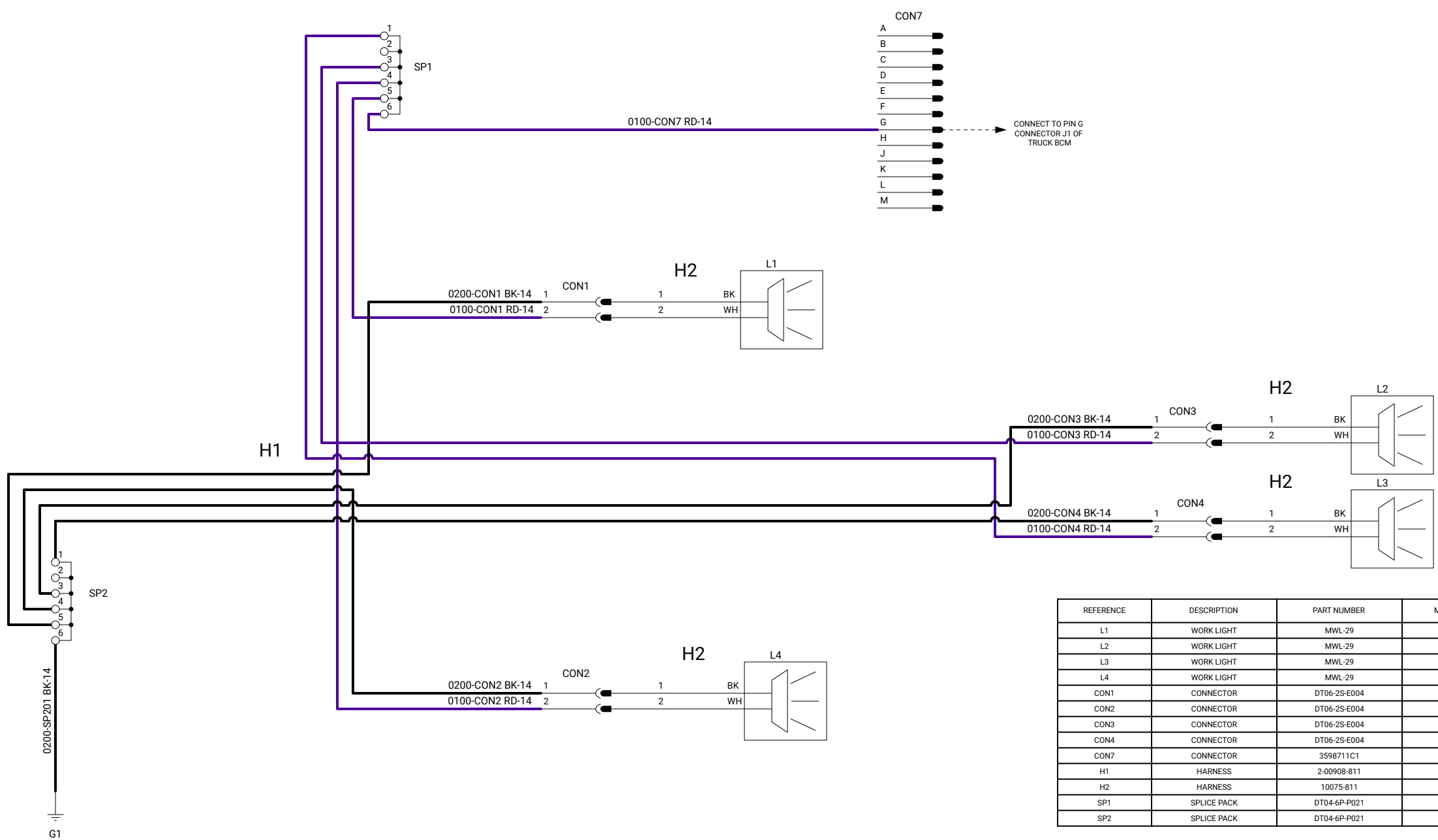
---

**COLOR DESCRIPTIONS**

GROUND

12V POWER  
 SWITCHED 12V POWER

WORK LIGHT SCHEMATIC



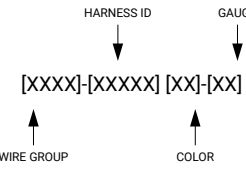
REFERENCE	DESCRIPTION	PART NUMBER	MANUFACTURER
L1	WORK LIGHT	MWL-29	MAXXIMA
L2	WORK LIGHT	MWL-29	MAXXIMA
L3	WORK LIGHT	MWL-29	MAXXIMA
L4	WORK LIGHT	MWL-29	MAXXIMA
CON1	CONNECTOR	DT06-2S-E004	DEUTSCH
CON2	CONNECTOR	DT06-2S-E004	DEUTSCH
CON3	CONNECTOR	DT06-2S-E004	DEUTSCH
CON4	CONNECTOR	DT06-2S-E004	DEUTSCH
CON7	CONNECTOR	3598711C1	NAVSTAR
H1	HARNESS	2-00908-811	HOLT MFG
H2	HARNESS	10075-811	HOLT MFG
SP1	SPLICE PACK	DT04-6P-P021	DEUTSCH
SP2	SPLICE PACK	DT04-6P-P021	DEUTSCH

NOTES:

1. RUN HARNESS IN LOCATIONS SHOWN ACCORDING TO DRAWING NUMBER 0-00606-01.
2. USE COPPER GREASE ON THREADS WHEN SECURING ALL RING CRIMP FASTENERS.

DRAWN	SWP	DATE	09/29/2023	DWG NO.	10001-803	SIZE	B	REV.	-
CHECKED	ABP	DATE	10/10/2023	TITLE <b>SK40H WATER TANK ELECTRICAL SCHEMATIC</b>		PROPRIETARY AND CONFIDENTIAL. THE INFORMATION CONTAINED IN THIS DRAWING IS THE SOLE PROPERTY OF HOLT MANUFACTURING. ANY REPRODUCTION IN PART OR AS A WHOLE WITHOUT THE WRITTEN PERMISSION OF HOLT MANUFACTURING IS PROHIBITED.			
APPROVED	-	DATE	MM/DD/YYYY						
PAGE	1 of 3	SCALE	NTS						

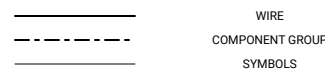
### HARNESS/WIRE IDENTIFICATION CODE



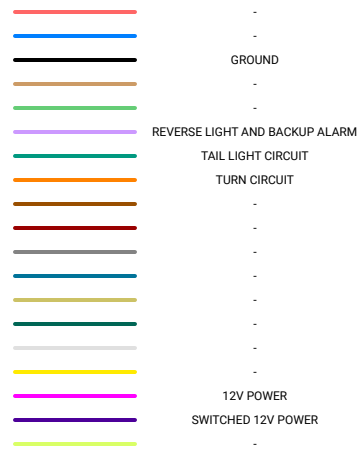
### COLOR ABBREVIATIONS

RD	RED
WH	WHITE
OR	ORANGE
YL	YELLOW
PK	PINK
BK	BLACK
GY	GRAY
PU	PURPLE
BR	BROWN
GN	GREEN
BU	BLUE

### LINE PATTERNS

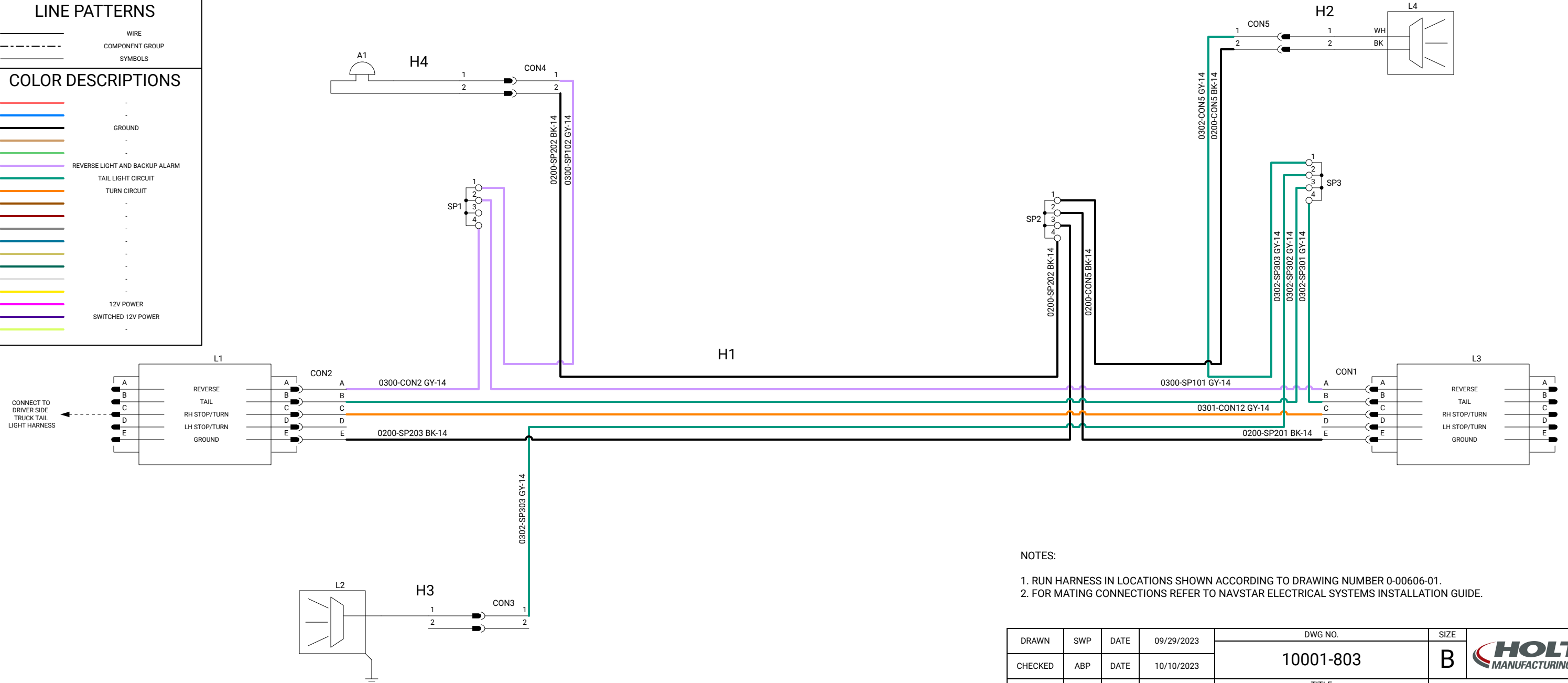


### COLOR DESCRIPTIONS



### TAIL LIGHT SCHEMATIC

REFERENCE	DESCRIPTION	PART NUMBER	MANUFACTURER
L1	LH STOP TURN TAIL LIGHT	53712	GROTE
L2	LICENSE PLATE LIGHT	M436B	PETERSON
L3	RH STOP TURN TAIL LIGHT	53702	GROTE
L4	LIGHT BAR	M20343R	MAXXIMA
A1	BACKUP ALARM	3832256C1	NAVSTAR
SP1	SPLICE PACK	DT04-4P-P021	DEUTSCH
SP2	SPLICE PACK	DT04-4P-P021	DEUTSCH
SP3	SPLICE PACK	DT04-4P-P021	DEUTSCH
H1	HARNESS ASSEMBLY	2-01411-811	HOLT MFG
H2	HARNESS ASSEMBLY	10076-811	HOLT MFG
H3	HARNESS ASSEMBLY	10077-811	HOLT MFG
H4	HARNESS ASSEMBLY	10078-811	HOLT MFG



#### NOTES:

1. RUN HARNESS IN LOCATIONS SHOWN ACCORDING TO DRAWING NUMBER 0-00606-01.
2. FOR MATING CONNECTIONS REFER TO NAVSTAR ELECTRICAL SYSTEMS INSTALLATION GUIDE.

DRAWN	SWP	DATE	09/29/2023	DWG NO.	10001-803	SIZE	B	REV.	-
CHECKED	ABP	DATE	10/10/2023	TITLE		 PROPRIETARY AND CONFIDENTIAL THE INFORMATION CONTAINED IN THIS DRAWING IS THE SOLE PROPERTY OF HOLT MANUFACTURING. ANY REPRODUCTION IN PART OR AS A WHOLE WITHOUT THE WRITTEN PERMISSION OF HOLT MANUFACTURING IS PROHIBITED.			
APPROVED	-	DATE	MM/DD/YYYY	SK40H WATER TANK					
PAGE	2 of 3	SCALE	NTS	ELECTRICAL SCHEMATIC					

### HARNESS/WIRE IDENTIFICATION CODE

HARNESS ID      GAUGE  
 ↓                    ↓  
 [XXXX]-[XXXXX] [XX]-[XX]

↑                    ↑  
 WIRE GROUP      COLOR

---

### COLOR ABBREVIATIONS

RD	RED
WH	WHITE
OR	ORANGE
YL	YELLOW
PK	PINK
BK	BLACK
GY	GRAY
PU	PURPLE
BR	BROWN
GN	GREEN
BU	BLUE

---

### LINE PATTERNS

————— WIRE  
 - - - - - COMPONENT GROUP  
 ○ ○ ○ ○ ○ SYMBOLS

---

### COLOR DESCRIPTIONS

	-
	-
	GROUND
	PTO CIRCUIT
	-
	-
	-
	-
	-
	-
	-
	-
	-
	-
	-
	-
	-
	-
	-
	-
	-
	-
	-
	-
	-
	-
	-
	-
	-
	-
	-
	-
	-
	-
	-
	-
	-
	-
	-
	-
	-
	-
	-
	-
	-
	-
	-
	-
	-
	-
	-
	-
	-
	-
	-
	-
	-
	-
	-
	-
	-
	-
	-
	-
	-
	-
	-
	-
	-
	-
	-
	-
	-
	-
	-
	-
	-
	-
	-
	-
	-
	-
	-
	-
	-
	-
	-
	-
	-
	-
	-
	-
	-
	-
	-
	-
	-
	-
	-
	-
	-
	-
	-
	-
	-
	-
	-
	-
	-
	-
	-
	-
	-
	-
	-
	-
	-
	-
	-
	-
	-
	-
	-
	-
	-
	-
	-
	-
	-
	-
	-
	-
	-
	-
	-
	-
	-
	-
	-
	-
	-
	-
	-
	-
	-
	-
	-
	-
	-
	-
	-
	-
	-
	-
	-
	-
	-
	-
	-
	-
	-
	-
	-
	-
	-
	-
	-
	-
	-
	-
	-
	-
	-
	-
	-
	-
	-
	-
	-
	-
	-
	-
	-
	-
	-
	-
	-
	-
	-
	-
	-
	-
	-
	-
	-
	-
	-
	-
	-
	-
	-
	-
	-
	-
	-
	-
	-
	-
	-
	-
	-
	-
	-
	-
	-
	-
	-
	-
	-
	-
	-
	-
	-
	-
	-
	-
	-
	-
	-
	-
	-
	-
	-
	-
	-
	-
	-
	-
	-
	-
	-
	-
	-
	-
	-
	-
	-
	-
	-
	-
	-
	-
	-
	-
	-
	-
	-
	-
	-
	-
	-
	-
	-
	-
	-
	-
	-
	-
	-
	-
	-
	-
	-
	-
	-
	-
	-
	-
	-
	-
	-
	-
	-
	-
	-
	-
	-
	-
	-
	-
	-
	-
	-
	-
	-
	-
	-
	-
	-
	-
	-
	-
	-
	-
	-
	-
	-
	-
	-
	-
	-
	-
	-
	-
	-
	-
	-
	-
	-
	-
	-
	-
	-
	-
	-
	-
	-
	-
	-
	-
	-
	-
	-
	-
	-
	-
	-
	-
	-
	-
	-
	-
	-
	-
	-
	-
	-
	-
	-
	-
	-
	-
	-
	-
	-
	-
	-
	-
	-
	-
	-
	-
	-
	-
	-
	-
	-
	-
	-
	-
	-
	-
	-
	-
	-
	-
	-
	-
	-
	-
	-
	-
	-
	-
	-
	-
	-
	-
	-
	-
	-
	-
	-
	-
	-
	-
	-
	-
	-
	-
	-
	-
	-
	-
	-
	-
	-
	-
	-
	-
	-
	-
	-
	-
	-
	-
	-
	-
	-
	-
	-
	-
	-
	-
	-
	-
	-
	-
	-
	-
	-
	-
	-
	-
	-
	-
	-
	-
	-
	-
	-
	-
	-
	-
	-
	-
	-
	-
	-
	-
	-
	-
	-
	-
	-
	-
	-
	-
	-
	-
	-
	-
	-
	-
	-
	-
	-
	-
	-
	-
	-
	-
	-
	-
	-
	-
	-
	-
	-
	-
	-
	-
	-
	-
	-
	-
	-
	-
	-
	-
	-
	-
	-
	-
	-
	-
	-
	-
	-
	-
	-
	-
	-
	-
	-
	-
	-
	-
	-
	-
	-
	-
	-
	-
	-
	-
	-
	-
	-
	-
	-
	-
	-
	-
	-
	-
	-
	-
	-
	-
	-
	-
	-
	-
	-
	-
	-
	-
	-
	-
	-
	-
	-
	-
	-
	-
	-
	-
	-
	-
	-
	-
	-
	-
	-
	-
	-
	-
	-
	-
	-
	-
	-
	-
	-
	-
	-